

## iFlow RP600/1200 Specifications

Model	iFlow RP600	iFlow RP1200	
<b>Transducer and hardware</b>	System frequency	600kHz	1200kHz
	Internal memory	8G standard (16G, extendable)	
	Transducer type	piston	
	Working mode	broadband (BB)	
	Beam	4 Beams Janus, 20°	5 Beams Janus, 20°
	Updating rate	1-2Hz	
<b>Water Velocity Profiling</b>	Velocity range (typical)	± 5m/s	
	Velocity range (maximum)	± 20m/s	
	Accuracy	± 0.25% of watwe velocity relative to ADCP	
	Resolution	1 mm/s	
	Profiling range(distance)	1-75m	0.2-25m
<b>Bottom tracking</b>	Velocity range	± 5m/s typical, ± 20m/s maximum	
	Depth range(minimum)	0.8m	0.15m
	Depth range(maximum)	90m	35m
	Accuracy	+ 0.25% of watwe velocity relative to ADCP	
	Resolution	1 mm/s	
<b>Cell</b>	Cell depth	0.1 ~ 4m	0.1 ~ 2m
	Quantity	1 ~ 256	
<b>Internal Sensors</b>	Temperature: range/accuracy/resolution	-10°C ~ +60°C / ±0.1°C / 0.001°C	
	Compass: range/accuracy/resolution	0° ~ 360° / ±0.5° / 0.001°	
	Motion sensor: range/accuracy/resolution	±30° / ±0.2° / 0.001°	
<b>Material</b>	Engineering plastic, aluminum alloy and titanium alloy three material selectable		
<b>Communication</b>	Communication protocol	RS-232, RS-422, WIFI	
	Baud rate	1200-115200	
<b>Power</b>	Iput	9~18VDC (standard 12V)	
	Power consumption	3.5W (average), 0.5W (sleep), 30W (peak)	
<b>Environment</b>	Working temperature	-5°C~+45°C	
	Storage temperature	-20°C~+60°C	
<b>Float</b>	Configuration	three hulls(trimaran)	
	Marerial	Polyethylene	
<b>Accessories</b>	ADCP with Transducer, Battery, Charger, Cables, Float, Processing software		



AUTHORIZED DISTRIBUTION PARTNER

19N106

### Hi-Target Surveying Instrument Co. Ltd

ADD: Building 13, Tian'An Technology Zone HQ Center, No. 555,  
North of Panyu RD, Panyu District, 511400 Guangzhou, China.  
www.hi-target.com.cn +86-20-28688296 info@hi-target.com.cn

IP67



# iFlow RP600/1200

Acoustic Doppler Current Profiler

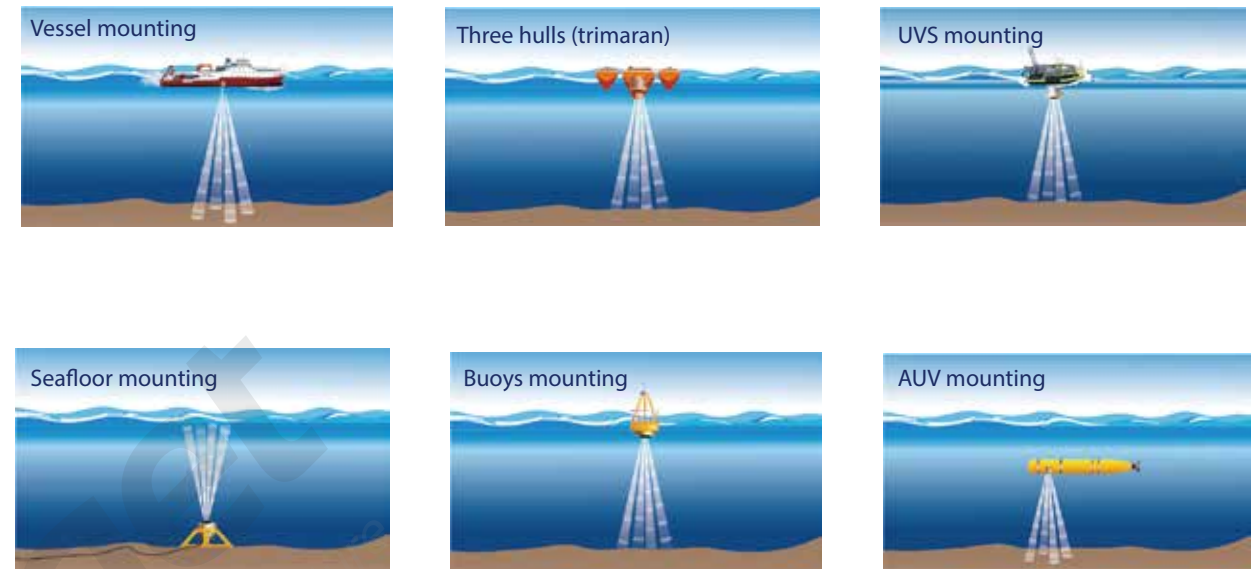


# iFlow RP600/1200

The iFlow RP series direct-reading Acoustic Doppler Current Profiler (ADCP) is an accurate and easy to use current profiling system, which can be deployed on flexible platform: trimaran, UVS, buoys and seafloor mounting and so on. Providing accurate measurement with 75m/25m range, the iFlow RP600/1200 can be widely used for monitoring and surveying discharge of rivers, canal, offshore and other engineering projects.



## Flexible and versatile mounting



### Multiple Built-in Sensors

Integrating the gyro, temperature, pressure and tilting sensor, iFlow RP600/1200 offers multiple source of information for the operation reference.



### Long Profiling Range Multiple Cells.

600Hz working frequency extends the current measurement range up to 75 meter ( RP1200 up to 25m ) with maximum 256 cells.



### High Precision Current Measurement

Supported by broadband signal processing technology, the anti-noise level has been improved while the current measurement accuracy can be up to  $0.25\% \pm 0.25\text{cm/s}$ .



### Multiple Working Mode

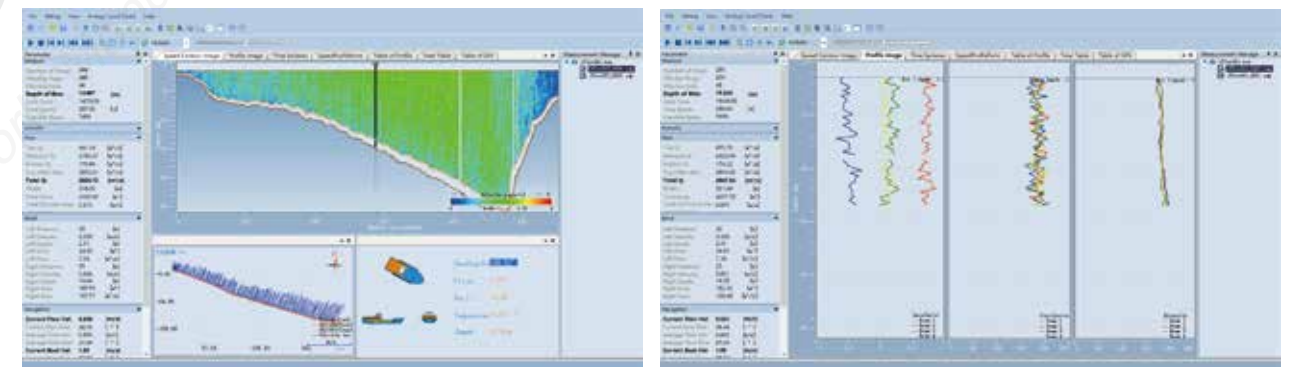
The iFlow RP600 support vessel has mounted, bottom-tracking, monitoring, DVL and self-contained modes.



### Easy to Use Software

Clear software working flow and UI lower the learning curve, making it easy to use.

## Monitoring and collecting software



## Dimensions

